

Card



QR



Face



Finger



Touch Less



Remote

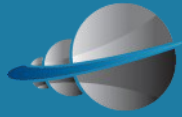


Palm

Access Control Integration

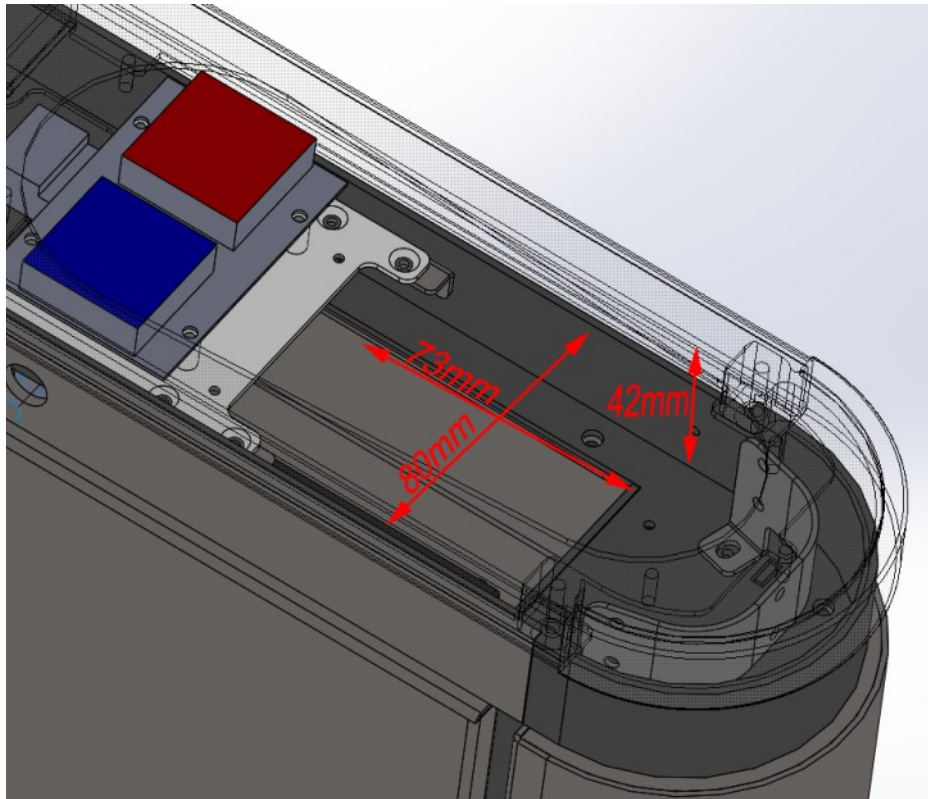
All our speed gate can be integrated with any 3rd access control systems, such as ID cards, QR/bar code, biometric, button, remote control, finger print, palm vein and so on.





The access control company is responsibly for supplying and installing the access control system. To assist with the installation Evolve has put together the following information.

Card reader mounting

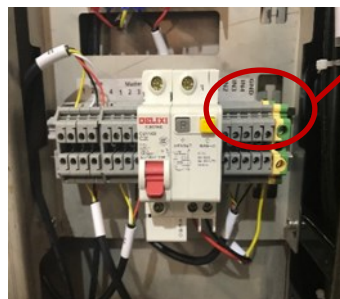
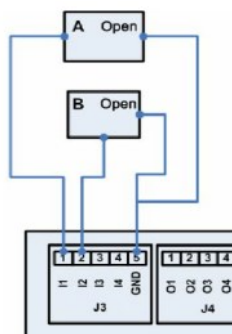
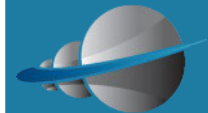


Card readers triggers (OPEN Commands)

The passage authorisation signals are connected to the TD controller, a separate authorisation signal is required for each direction of travel. The passage authorisation signal must be as short as possible, ideally 100ms but no more than 1 second, volt free, normally open contact.

The following are the TD inputs which have been extended to a terminal rail:-

- **Open Cmd A**, J3 pins 1 and 5. Volt free, normally open contact closing for not less than 100ms and not more than 1 second, opens the gates in direction 'A'.
- **Open Cmd B**, J3 pins 2 and 5. Volt free, normally open contact closing for not less than 100ms and not more than 1 second, opens the gates in direction 'B'.
- **Hold Open A or B**: If the respective open cmd receives a closed contact longer than 3 seconds than the logic will assume that this is a "HOLD OPEN" command and the gate will remain held open until the closed contact is removed.



The open commands are terminated in these screw terminals.

IN1 = Open in A

IN2 = Open in B

IN3 = Not used

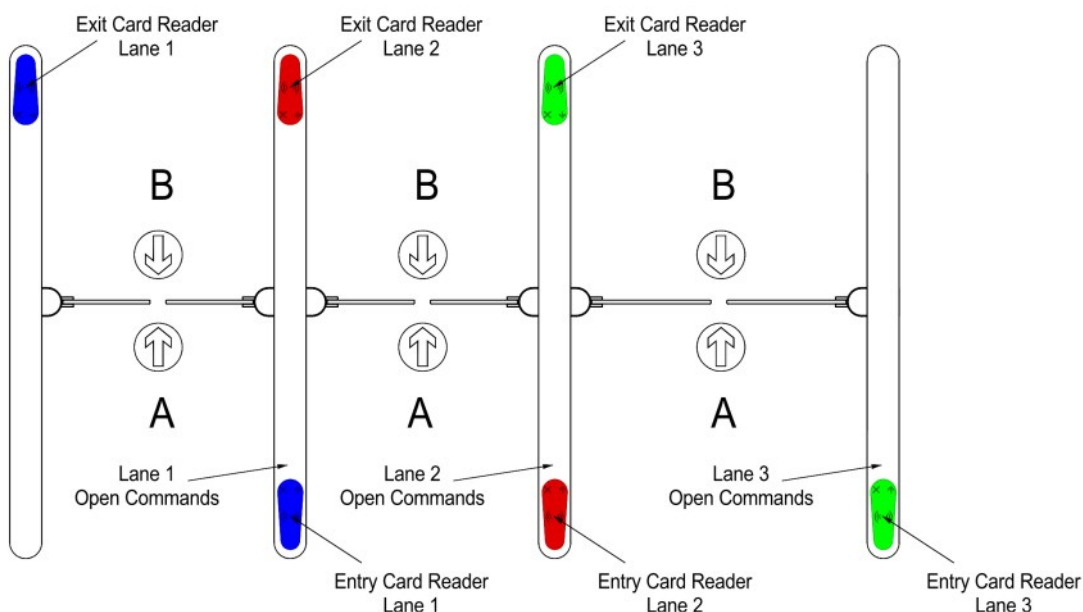
IMPORTANT NOTE(s)

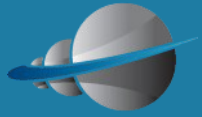
Evolve does not recommend using the passage authorisation signals for fire alarm activation. It is best practise to use a separate fire alarm authorisation signal supplied by the buildings fire alarm company.

The following diagram shows the typical location of the card reader and where the passage authorisation signals need to be connected.

Card reader locations

The following diagram shows the typical location of the card readers and where the passage authorisation signals (open commands) need to be connected.





Passage Confirmation

The access control company must specify whether they require passage confirmation (transaction complete) outputs from the gate. If required, then an optional transaction complete relay card will be required, please refer to the auxiliary relays data sheet.

Alarm outputs

The card access company must specify whether they require alarm outputs, sometimes needed to trigger CCTV recording and other security beaches like tailgating, loitering, wrong direction of travel. If required, then an optional sounder relay card will be required, please refer to the auxiliary relays data sheet.

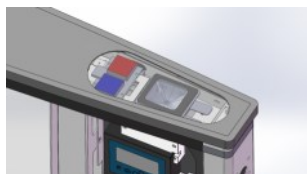
QR Reader Integration

QR and barcode readers are becoming increasing popular for controlling visitors and contactors.

Issuing temporary QR or barcodes via a mobile phone or paper is a very cost efficient solution compared to issuing plastic cards that offered get taken away.

Hidden Integration

A variety of QR readers can be integrated behind the PG300 access control tear drop.



QR Mounting Bracket

Bespoke bolt on mounting brackets are ideal for existing customers looking to use both access cards and QR reader.



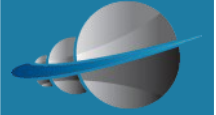
Face Recognition Integration

Face recognition is becoming increasingly popular for controlling staff, visitors and contractors.

Installing an access control system with face recognition means that you will never have to replace lost or stolen tokens.



Access Control Integration



HOW TO CONTACT US



UK Head Office

Evolve Security Products Ltd.

Unit 4, Kenyons Yard,
Weyhill Road,
Andover,
Hampshire.
ENGLAND
SP10 3NP

t: 0044 1264 334786

e: Sales@EvolveSecurityProducts.com

w: EvolveSecurityProducts.com

w: Evolvesp.net

HK Head Office

Evolve Autogate Products Ltd.

Flat C,4/F
Lladro Center,
No., 72 Hoi Yuen Road,
Kwun Tong,
Kowloon.
HONG KONG

t: 00852 35231568

e: info@Evolve-Autogate.com

w: Evolve-Autogate.com

**[Click Here For Full List of
Global Contacts](#)**

“Evolving the way you manage your pedestrian access.”